

# STEWARDSHIP REPORT 2022



## CONTENTS

### ABOUT THIS REPORT

The Stewardship Report on the U.S. Army Europe and Africa (USAREUR-AF) Integrated Training Area Management program is published annually and reports performance and accomplishments for all program components. This report covers the period from January 1 to December 31, 2022. For further information, historical reports, or a digitized copy, visit our website or Facebook page:

<https://srp.usareur.army.mil>  
<http://www.facebook.com/usareur.srp>

E-Mail:  
[usarmy.bavaria.7atc.list.usareur-srp@army.mil](mailto:usarmy.bavaria.7atc.list.usareur-srp@army.mil)

|                                     |    |
|-------------------------------------|----|
| LETTER FROM THE COMMANDER           | 1  |
| WHO WE ARE                          | 2  |
| ITAM MISSION                        | 4  |
| TRAINING REQUIREMENTS INTEGRATION   | 6  |
| RANGE AND TRAINING LAND ASSESSMENT  | 8  |
| LAND REHABILITATION AND MAINTENANCE | 10 |
| SUSTAINABLE RANGE AWARENESS         | 12 |
| GEOGRAPHIC INFORMATION SYSTEMS      | 14 |
| 80 YEARS OF HISTORY USAREUR-AF      | 16 |
| FOUR DECADES OF ITAM                | 18 |
| WHO NEEDS WHAT                      | 20 |
| TAP IN                              | 22 |
| BY THE NUMBERS                      | 24 |
| ITAM SUPPORTED EXERCISES            | 26 |
| ENVIRONMENTAL OUTREACH              | 28 |
| PROTECTING BIODIVERSITY             | 30 |
| 2023 INITIATIVES                    | 32 |

Cover: Reconnaissance platoons of the 173rd Airborne Brigade conduct mountain and arctic warfare training with soldiers from the Italian Army's 3rd Alpini Regiment during Exercise Steel Blizzard at Pian dell'Alpe in Usseaux, Italy.

# OUR MISSION



U.S. Army Europe and Africa (USAREUR-AF) provides ready, combat-credible land forces to deter, and, if necessary, defeat aggression from any potential adversary in Europe and Africa. To achieve this, USAREUR-AF sets the essential conditions necessary, and is prepared to serve as a Combined Joint Force Land Component Command, to fight and win across the full spectrum of military operations from contingency response to large-scale, ground combat operations.



7th Army Training Command (7th ATC) enables the Soldiers and Civilians of the 7th ATC HQ, JMRC, TSAE, and CATC to focus on their mission to provide lethal formations (U.S. and allies) to a Land Component Commander to fight a near peer adversary.

## THE CROWN JEWELS OF U.S. ARMY EUROPE

233 km<sup>2</sup>



HQ 7th ATC

GRAFENWOEHR TRAINING AREA

**Grafenwoehr Training Area (GTA)** is the U.S. Army's largest and most sophisticated permanent training area in Europe.

The 7th ATC's GTA provides the highest quality ranges, maneuver areas, other training facilities, training assistance and support to U.S., Joint and Multinational commands, enabling them to safely achieve and sustain live-fire qualification gunnery standards and to hone their skills to win in any operating environment.

**Hohenfels Training Area (HTA)** is the largest USAREUR-AF maneuver training area and headquarters to the Joint Multinational Readiness Center (JMRC).

JMRC is the only Army Combat Training Center outside the continental U.S. HTA has 1,345 buildings for training, 319 km of roads, numerous cross-country trails, and one short take-off / landing airfield.

163 km<sup>2</sup>



HOHENFELS TRAINING AREA

# 7TH ARMY TRAINING COMMAND (7TH ATC)

## 7th Army Training Command

The 7th Army Training Command (7th ATC) resources the training readiness for all of USAREUR-AF's assigned and allocated forces throughout the United States European Command (EUCOM) area of operations with the following organizations:



Joint Multinational Readiness Center



Grafenwoehr Training Area



Combined Arms Training Center



Training Support Activity Europe



Joint Multinational Simulation Center



International Special Training Center



7th Army NCO Academy



Joint Multinational Training Group-Ukraine

# LETTER FROM THE COMMANDER

I am honored to present the 2022 Integrated Training Area Management (ITAM) Stewardship Report on behalf of the 7th Army Training Command (7th ATC). This report illustrates the important ways the U.S. Army and our partners work together to optimize training and protect the environment in Europe and Africa.

The importance of interoperability, readiness, and capability in the European theater cannot be understated. Our objective as the dynamic, mobile training capability for the United States Army in Europe and Africa is directly supported by the sustainment of natural resources. The ITAM program is a critical training enabler that mitigates impacts, enhances environmental conditions, and preserves land resources for maximum training capability.

The success of our proven strategy to sustain and maintain training lands depends on our ability to build and strengthen relationships. Our partnerships with host nation professionals, local community leaders, North Atlantic Treaty Organization (NATO) partners, and allies are essential to optimize collective training. Collaboration on mission essential land use, facilities, exercise coordination and priorities of effort bring us all together with the unified investment in deterring aggression.

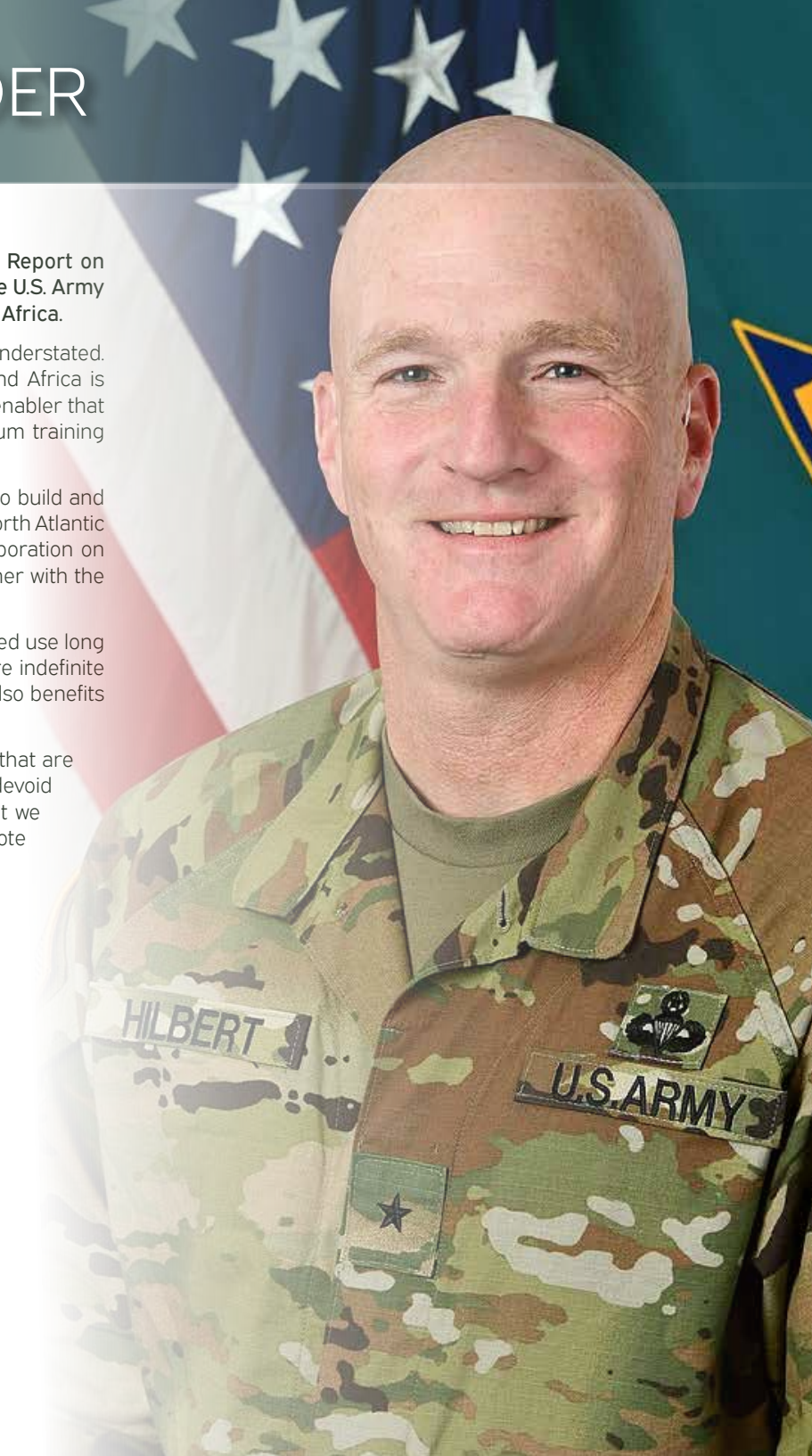
ITAM is the central tenet that ensures our training areas will be available and accessible for continued use long into the future. The stewardship actions supported through the strength of our partnerships ensure indefinite training sustainment. In addition, the environmental quality of military land managed under ITAM also benefits from the program initiatives.

The 7th ATC footprint includes multiple training areas that contain ecologically significant biotopes that are critical to the preservation of sensitive species and overall ecological health. The large land areas devoid of agriculture and human infrastructure are unique, high value habitats. It is with great pride that we continue to cooperate with our partners to sustain training capability, support biodiversity, and promote environmental stewardship.

The training areas we sustain and protect are critical to mission success and environmental preservation. We are well prepared for increased training requirements because of the legacy of resource investments in ITAM program initiatives throughout USAREUR-AF. Over four decades, the ITAM program has preserved and expanded our training capabilities worldwide.

With our continued unified support of the environment and training land resources, we stand ready, capable, and interoperable in the ongoing U.S. commitment to peace and stability in Europe and Africa.

Joseph E. Hilbert  
Brigadier General, U.S. Army  
Commanding



# WHO WE ARE



## U.S. Army Europe and Africa

### USAREUR-AF Mission

On November 10 2020, the U.S. Army announced the consolidation of U.S. Army Europe and U.S. Army Africa into one Army Service Component Command (ASCC). This transformation improves the Army's ability to meet African and European strategic and operational objectives outlined in the National Defense Strategy by consolidating ASCC functions under one four-star headquarters in Wiesbaden, Germany. Only well-postured, modernized, and interoperable strategic land power can deter competitors and defeat adversaries. U.S. Army Europe and Africa (USAREUR-AF) forces are strategically positioned across our 104-country area of responsibility to deter aggression and assure our allies and partners of the U.S. commitment to peace and stability in Europe and Africa. There are approximately 73,000 U.S. Army personnel assigned and deployed throughout Europe and Africa.

[facebook.com/USArmyEURAF/](https://www.facebook.com/USArmyEURAF/)



## 7th Army Training Command

### 7th ATC Mission

The 7th Army Training Command (7th ATC) is the U.S. Army's largest overseas training command, setting the training environment and resourcing live and virtual training for all U.S. Army forces stationed and deployed in Europe, as well as select U.S. European Command, allied and partner units. 7th ATC provides and projects ready, combat credible forces to U.S. Army Europe and U.S. European Command while testing and strengthening interoperability with allies and partners to support theater operations and drive readiness within NATO.

- » Readiness is our #1 priority. We deliver ready, trained, and equipped forces for operational demands.
- » 7th ATC provides resource training readiness for all of USAREUR-AF's assigned and allocated forces throughout the EUCOM area of operations.
- » We lead the Army in developing ally and partner nation interoperability, providing the Army with an active learning, near peer environment to press modernization initiatives.
- » We operate a unique Combat Training Center (CTC) that focuses on interoperability and training Brigade Combat Teams to fight and win when called upon.

[facebook.com/7thATC/](https://www.facebook.com/7thATC/)



## Training Support Activity Europe

### TSAE Mission

The Training Support Activity Europe (TSAE) provides home-station, expeditionary, rotational, and contingency training support across the USAREUR-AF's Command Areas of Responsibility in order to build readiness and increase interoperability of all U.S. assigned, attached, regionally aligned forces, our multinational partners, and allies. On behalf of 7th ATC and U.S. Army, TSAE manages the Training Support System management process and the theater Visual Information program.

[facebook.com/TrainingSupportActivityEurope/](https://www.facebook.com/TrainingSupportActivityEurope/)



## Sustainable Range Program

### SRP Mission

The Sustainable Range Program (SRP) is the Army's overall approach for improving the way in which it designs, manages, and uses its ranges to ensure long-term sustainability.

[facebook.com/USAREUR.SRP/](https://www.facebook.com/USAREUR.SRP/)



## Integrated Training Area Management

### ITAM Mission

Integrated Training Area Management (ITAM) is a management and decision-making process that integrates training and other mission requirements for land use with sound natural resource management practices.

ITAM is a core program within the Army's SRP under the direction of the Chief, Training Support Systems Division, Office of the Deputy Chief of Staff, G-3/5/7.

### ITAM:

- » Develops methods to maintain natural environments that are resilient and resistant to military use
- » Provides capabilities to establish training land conditions and monitors training lands (Range and Training Land Assessment)
- » Provides an awareness program for land users (Sustainable Range Awareness)
- » Provides the means to apply training loads to land capabilities, resulting in land management that ensures that training does not stop due to non-compliance with environmental laws (Training Requirement Integration and Geographic Information System)
- » Sustains the Army's live training capability (Land Rehabilitation and Maintenance)



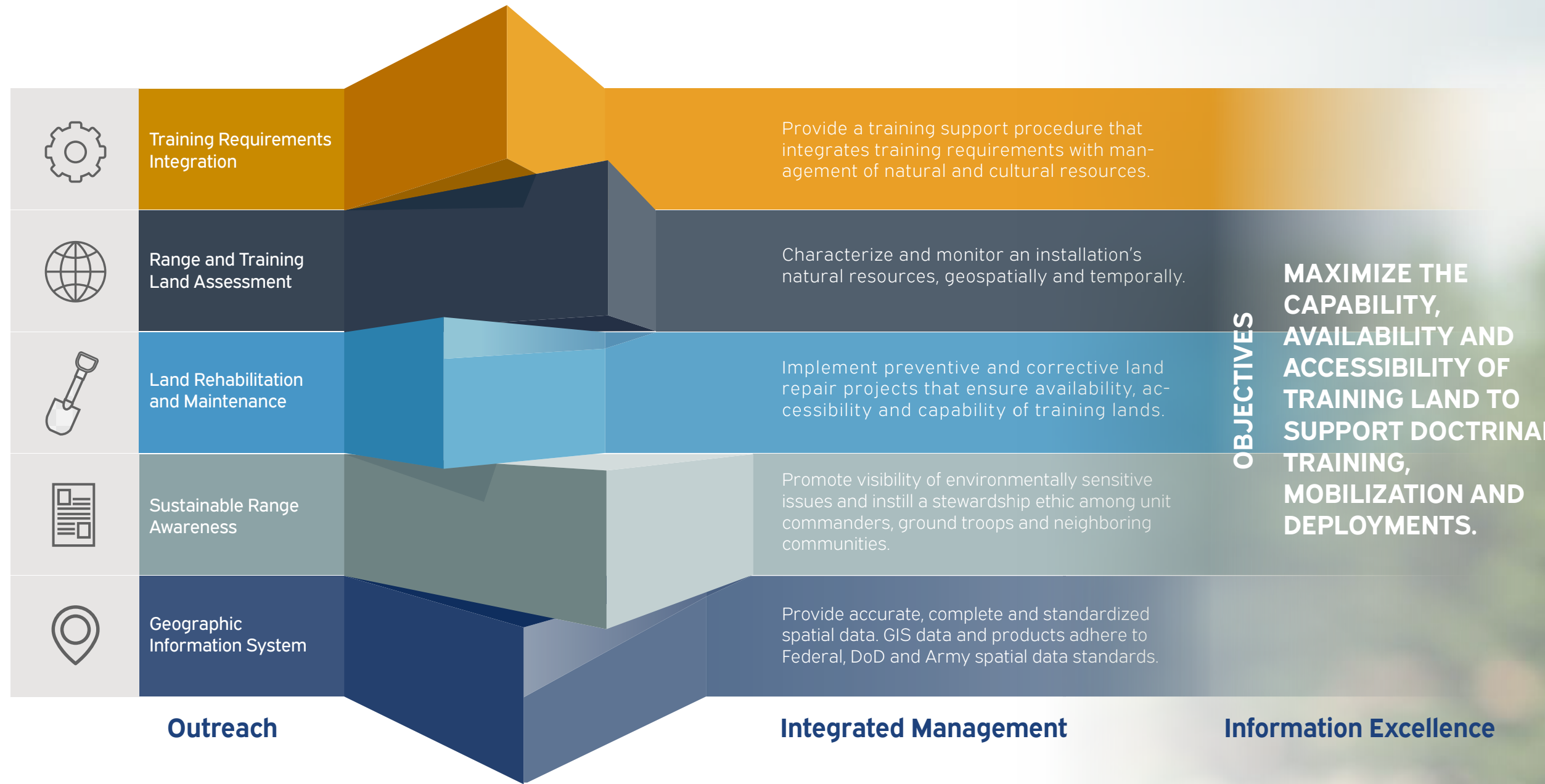
Joseph Robinette Biden Jr.  
46th President of the United States

“Together, we’re deploying more assets and capabilities to bolster our alliance across all domains - land, air, sea, cyber and space. We’ve reaffirmed that our Article 5 commitment is sacred: An attack on one is an attack on all, and we will defend every inch of NATO territory.”

President Joseph Biden  
United States of America

# ITAM MISSION

LINES OF EFFORT



# TRAINING REQUIREMENTS INTEGRATION

The Training Requirements Integration (TRI) component of ITAM provides a decision support capability based on the integration of training requirements, land conditions, range facilities, and environmental regulations. TRI involves collaboration between military units, range officers, organization personnel, trainers, environmental technical staff, natural and cultural resource managers, as well as local communities to:

- » Facilitate decision-making concerning land use planning and management that meets training requirements, regulatory compliance and conservation measures
- » Analyze training impacts to support effective land management procedures
- » Develop land use strategies that consider the impacts of military operations on natural resources and environmentally-sensitive lands

Military training areas across USAREUR-AF provide innovative and multinational training opportunities to train in a realistic arena, while at the same time supporting high biodiversity for threatened and endangered species. By bringing together military and environmental stakeholders, TRI ensures the military training mission can be conducted while providing sound environmental and natural resource stewardship.



## U.S. Army Southern European Task Force, Africa (SETAF-AF)

Members of SETAF-AF, Italian Army, NATO military personnel from Italy and Slovenia, the Friuli Venezia Giulia regional command and other key environmental stakeholders discussed managing military operational training demands while protecting the environment, 20-23 September, at the annual Sustainable Training Area Management workshop (STAMW). The workshop is sponsored by the U.S. European Command

Environmental Security Engagement Program, bringing regional governments together with military and civilian representatives to present information, foster ongoing partnerships and together find a balance between meeting the demands of military training requirements while safeguarding and protecting the environment.



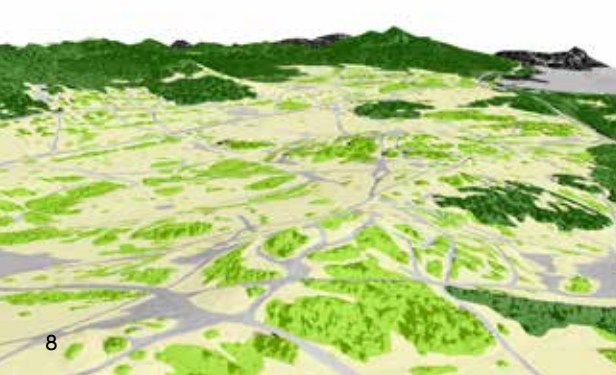
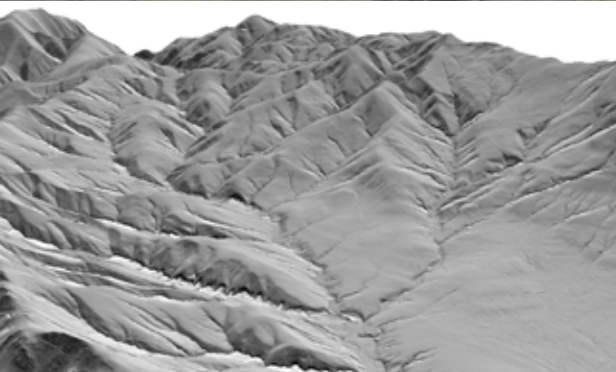
Ms. Jenna Snow, USAREUR-AF ITAM Program Manager, 7th ATC, addresses workshop participants.



Guided field visit to U.S. Local Training Area Maniago, Dandolo Military Operations on Urbanized Terrain (MOUT) Site

# RANGE AND TRAINING LAND ASSESSMENT

Range and Training Land Assessment (RTLTA) support is critical to guaranteeing training sustainability by providing the ability to accurately assess land quality and monitor land conditions. RTLTA is used to characterize and monitor natural resources, geospatially and temporally, conducting assessments of change in land conditions, particularly in connection with training exercises. The RTLTA program identifies the need for Land Rehabilitation and Maintenance (LRAM) and provides insightful recommendations to range managers and trainers.



In 2022, several projects were executed by ITAM to meet U.S. AR 350-19 training land sustainability requirements. These projects improve and maintain the availability, accessibility, capability, and safety of military training land through timely identification of areas requiring construction and maintenance.

One of the RTLTA projects concluded in 2022 consisted of a Condition Assessment and 5-Year Work Plan for select training areas and ranges in Italy, which are subject to significant runoff and erosion. Data collection and assessment involved aerial imagery analysis, acquisition of training use information and on-site surveys. A similar project was performed for three training areas and ranges in Poland. The Poland projects included vegetation classification based on aerial imagery and encroachment baseline analysis.



Examples of existing infrastructure, some in need of repair or maintenance

# LAND REHABILITATION AND MAINTENANCE

Land Rehabilitation and Maintenance (LRAM) implements corrective land repair projects that ensure availability and suitability of training lands.

## LRAM projects are performed to:

- » Improve the condition and safety of the training environment
- » Prevent the loss of suitable training lands
- » Minimize damage to training lands by erosion and flooding
- » Improve accessibility and maneuverability within training areas
- » Foster relations with the host nation

## Erosion Control

## Topsoil Application, Sowing and Mulching

## Profiling and Terracing

## Vegetation Removal

## Substrate Improvement

## Planning and Construction Support



## Maneuver Trail Repair

A project performed in Hohenfels Training Area (HTA) provided access for maneuver training from the open valley floor to the wood line giving cover to training units, and to the ridge line with an over-watch position of the open valley. Erosion control was improved and water collection structures established, also providing habitat for breeding yellow-bellied toads.



## Open Maneuver Repair

Excess sedimentation caused by training at HTA prevented adequate drainage of the valley. The sediment was removed and a permeable layer of crushed rock was applied, improving the crossing for vehicles while facilitating drainage and thus preventing sediment build-up in erosion control structures.



## Understory Vegetation Removal

Together with the Environmental Division and Bundesforst, ITAM worked within German Federal Forest Law and Natura Habitats Directive guidelines to provide understory removal along maneuver corridors at HTA. Maneuver corridors are important for providing avenues of approach from open maneuver areas. By removing understory vegetation, the project increased maneuver training area, provided better line-of-sight on maneuver trails, and increased the accuracy of the MILES training system.



# SUSTAINABLE RANGE AWARENESS

The Sustainable Range Awareness (SRA) program develops and distributes educational materials to users of range and training lands, and integrates ITAM/SRA products into existing command or installation awareness activities and events. SRA helps to reduce avoidable environmental impacts on training lands by providing information to unit commanders and ground troops on land use constraints. The SRA program also involves public outreach in neighboring communities.

## SOLDIER'S FIELD CARDS

## OUTREACH

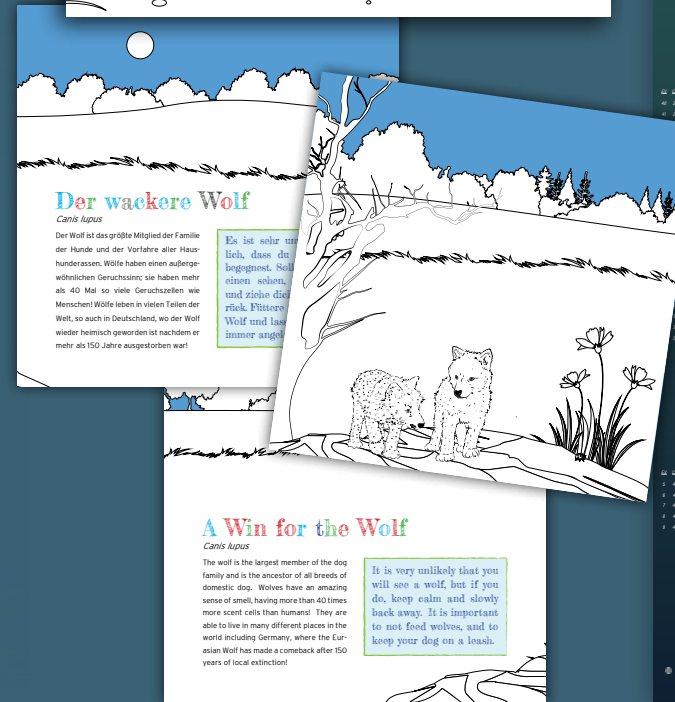
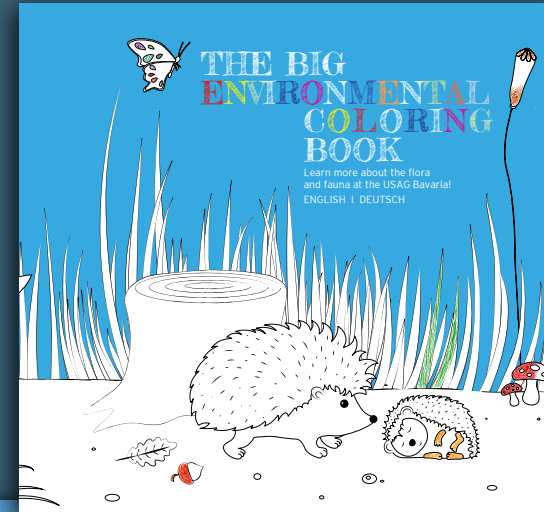
ITAM participated in the 2022 Netzberg Elementary School Career Day. Mr. Theodore Schall (ITAM Operations Coordinator) and Mr. Joshua Bridges (GTA ITAM Coordinator) explained basics about maps and their importance in modern daily lives.



ITAM, Bundesforst and the Environmental Division highlighted their cooperation and programs in a presentation to the Senior Spouses during the EUCOM Component Commanders' Conference (CCC) at GTA.



## ADDITIONAL PRODUCTS



### ITAM

INTEGRATED TRAINING AREA MANAGEMENT  
USAREUR-AF

2023

QUALITY LANDS      QUALITY SOLDIERS

JANUARY      FEBRUARY

MARCH      APRIL

MAY      JUNE

JULY      AUGUST

SEPTEMBER      OCTOBER

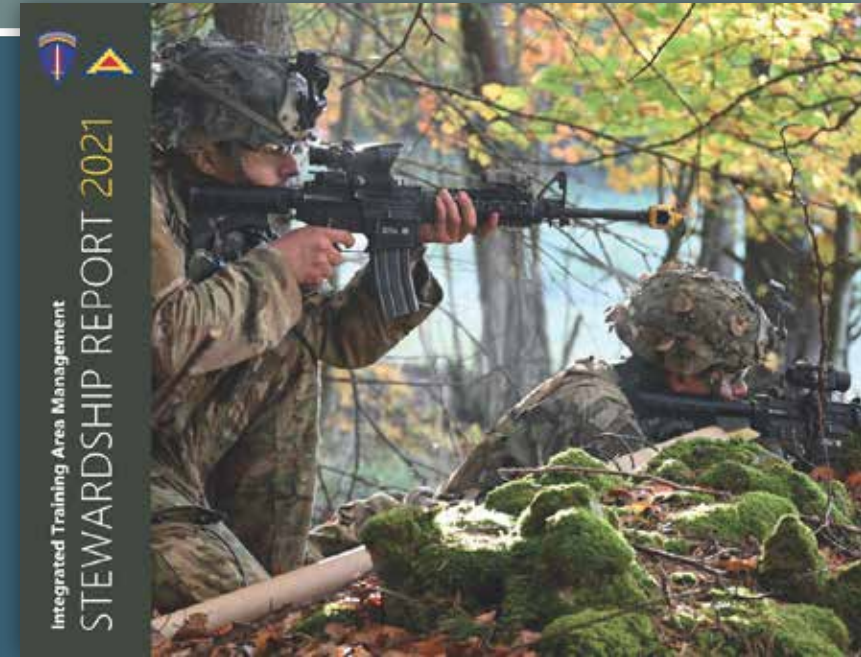
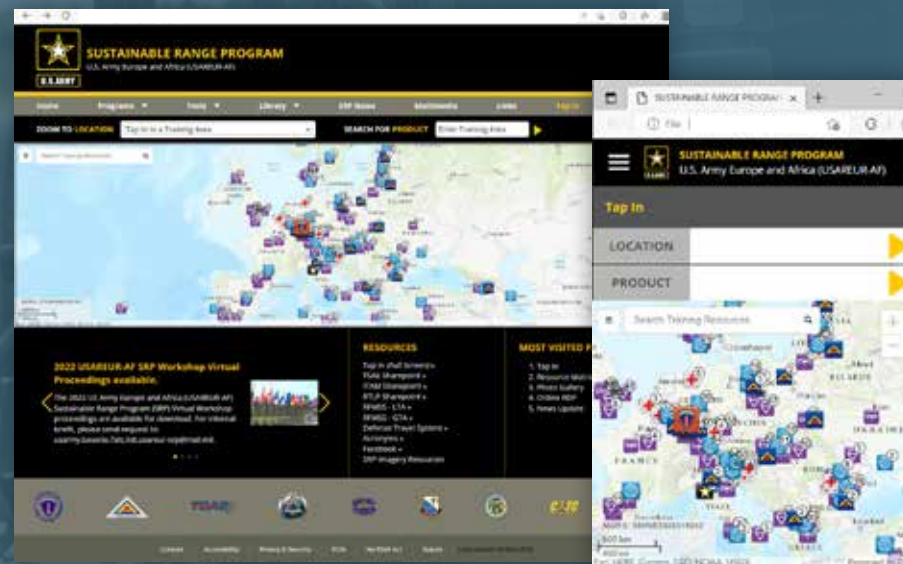
NOVEMBER      DECEMBER

USAREUR-AF ITAM  
@spusareurarmyml    @spineurarmyml    facebook.com/usareur-srp  
usarmy.bavaria.7a3c1st.usareur-srp@army.mil  
DSN 314-569-0365    CIV +49 (0) 9641-70-569-0365

## ONLINE RESOURCES

In 2022, the following enhancements were made to the USAREUR-AF SRP Web Portal:

- Modern user interface design
- Utilization of U.S. Army color scheme
- Responsive design - configured to fit all screen sizes such as desktop, laptop, mobile, tablets
- Compatible with Edge, Chrome, Firefox and Safari Browsers





# GEOGRAPHIC INFORMATION SYSTEMS

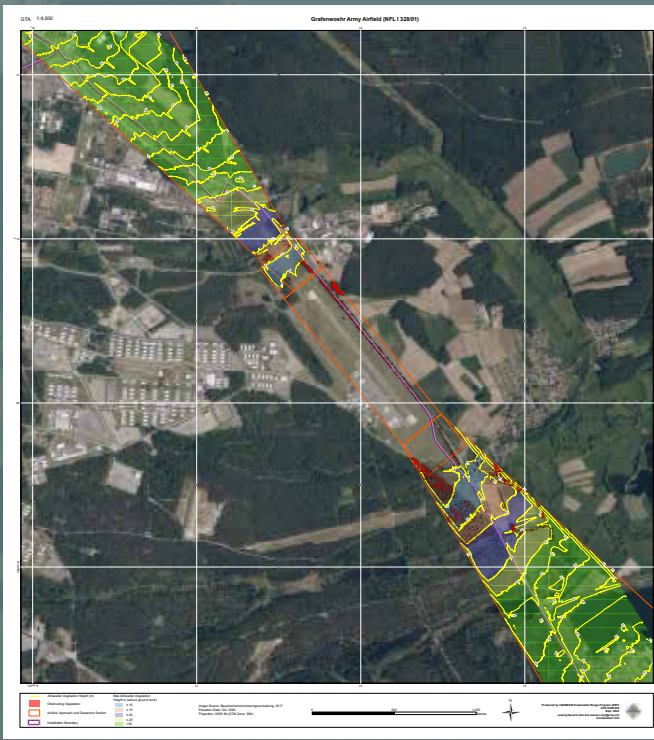
Throughout the Army, the Sustainable Range Program (SRP) Geographic Information System (GIS) mission is to create, analyze, manage and distribute authoritative standardized spatial information, products and services for the execution of training strategies and missions on U.S. Army ranges and training lands. The USAREUR-AF SRP GIS program strives to provide the SRP community, trainers and Soldiers with easily accessible and user-friendly products and applications that allow them to leverage the most accurate and complete geospatial datasets.

## Radio Tower Visibility Study



Hohenfels Training Area (HTA) is very hilly and wooded, which makes radio communications challenging. Although an extensive arrangement of communications towers exists across the training area, black spots persist. Using the latest LiDAR imagery, ITAM conducted intervisibility studies from each of the communications towers at HTA to determine each tower's coverage.

In the short-term, the resultant maps enable exercise coordinators to understand where potential areas with no signal exist and where mobile communications towers should be established to mitigate. In the long-term, the maps can help leadership identify if and where changes are needed to the existing infrastructure to enable better communications in the future.



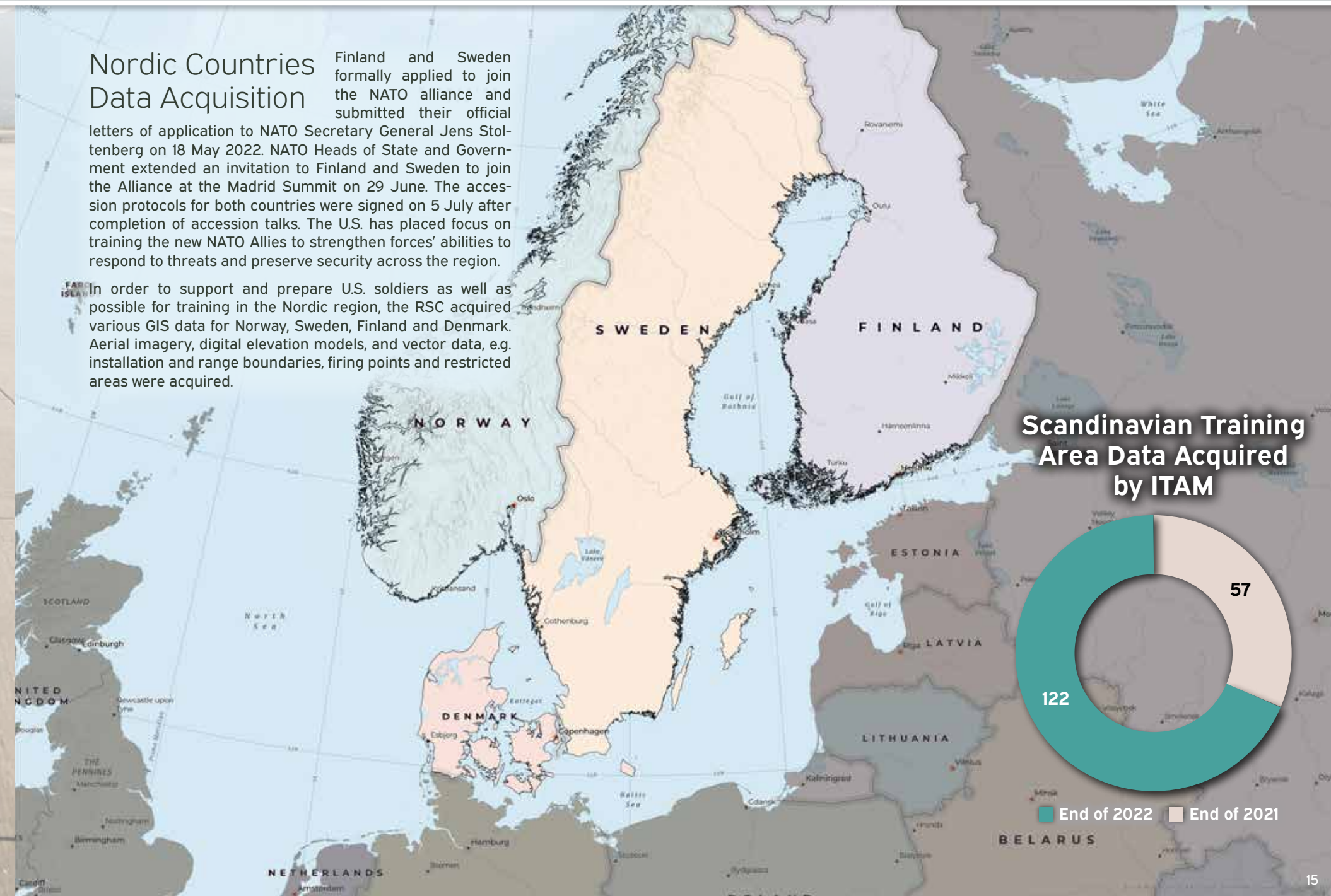
## Grafenwoehr Army Airfield Obstruction Protection Zone

In order to maintain compliance and ensure that Grafenwoehr Army Airfield is free from obstruction, an updated analysis was performed using the Army Airfield Obstruction Protection Zone regulation document (NFL 328/01). Utilizing the most recent LiDAR data, the required 3D protection zone was constructed and obstructing vegetation/trees around the approach and departure zone of the airfield were identified.

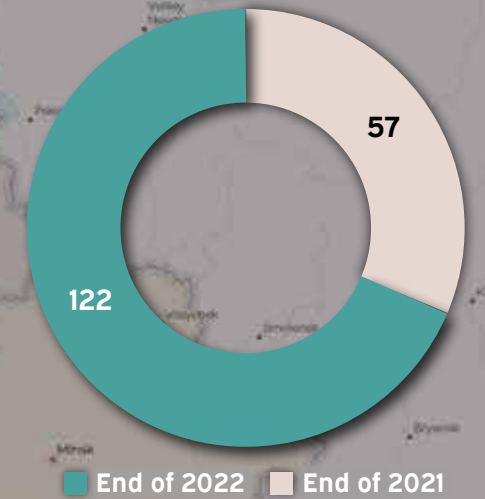
## Nordic Countries Data Acquisition

Finland and Sweden formally applied to join the NATO alliance and submitted their official letters of application to NATO Secretary General Jens Stoltenberg on 18 May 2022. NATO Heads of State and Government extended an invitation to Finland and Sweden to join the Alliance at the Madrid Summit on 29 June. The accession protocols for both countries were signed on 5 July after completion of accession talks. The U.S. has placed focus on training the new NATO Allies to strengthen forces' abilities to respond to threats and preserve security across the region.

In order to support and prepare U.S. soldiers as well as possible for training in the Nordic region, the RSC acquired various GIS data for Norway, Sweden, Finland and Denmark. Aerial imagery, digital elevation models, and vector data, e.g. installation and range boundaries, firing points and restricted areas were acquired.



## Scandinavian Training Area Data Acquired by ITAM



# 80 YEARS OF HISTORY USAREUR-AF



## 1942: First Troops deploy to the United Kingdom

Six weeks after the attack on Pearl Harbor, > 4,000 U.S. troops deployed to Northern Ireland and England, many assigned to U.S. Army V Corps, and formed U.S. Army Forces in the British Isles (USAFBI). USAFBI was replaced by European Theater of Operations, U.S. Army (ETOUSA) in June 1942. ETOUSA is recognized as a precursor to USAREUR-AF and its activation date is celebrated as the command's birthday.

## 1942: Operation Torch

In July 1942, President Roosevelt ordered U.S. forces to participate in an unprecedented amphibious invasion of French North Africa. Launched on Nov. 8, 1942, Operation Torch aimed to secure key strategic ports and airfields from southern Morocco to mid-Algeria, securing a path to Europe through the Mediterranean.

## 1955: SETAF established

U.S. Army Southern European Task Force (SETAF) was formally activated in 1955. By 1959, an agreement brought significant changes to SETAF, to include assigning Italian Army personnel to the SETAF general staff. In 1965, SETAF headquarters was moved from Verona to Caserma Carlo Ederle, Vicenza, where it remains to this day.

## 1990: Elements of VII Corps deploy to Saudi Arabia

After Iraq invaded Kuwait in Aug. 1990, USAREUR deployed elements with VII Corps to Saudi Arabia, followed by troops deployed from Germany to the Middle East to take part in the Feb. 1991 ground attack that drove Iraqi forces from Kuwait. In March 1991, SETAF deployed to Iraq in support of Operation Provide Comfort.

## 1992: Balkan Region

USAREUR conducted humanitarian operations throughout the Balkan region 1990 - 1995. In Oct. 1992, USAREUR provided medical support for Former-Yugoslavia United Nations Protection Force casualties. After the Dayton Peace Accords of 1995, USAREUR's 1st Armored Division began deploying forces to the area. The division and reserve component support troops formed Task Force Eagle as part of the NATO-led Implementation Force. It was the first time a NATO-sponsored force had deployed operationally outside NATO boundaries.

## 2003: USAREUR elements deploy to Iraq

Following the September 2001 terrorist attacks, USAREUR became a logistics hub for operations in Iraq and Afghanistan. In 2003, USAREUR deployed V Corps elements, 1st Armored Division, 1st Infantry Division, and SETAF's 173rd Airborne Brigade in support of Operation Iraqi Freedom. By Feb. 2005, both SETAF and the 173rd Airborne Brigade were deployed to Afghanistan as part of Combined Joint Task Force-76. On Dec. 13, 2003, Soldiers assigned to 4th Infantry Division, V Corps, would participate in the capture of Saddam Hussein. In 2013, V Corps was deactivated after nearly a century of service.

## 2022: USAREUR-AF celebrates 80 years

With a history that dates back eight decades, USAREUR-AF regularly pays tribute to the Soldiers, Civilians, and allies who helped make the command into what it is today. Annually, USAREUR-AF commemorates the anniversaries of events to honor the veterans of the "Greatest Generation" and their family members; showcase the relationship between the U.S. and its allies and partners; highlight the historical contributions made by units across the U.S. Army; and remember those who made the ultimate sacrifice. In this way, USAREUR-AF demonstrates we truly are "Stronger Together."

## 1944 : D-Day

On June 6, > 160,000 Allied troops landed along a 50-mile stretch of heavily-fortified French coastline, on the beaches of Normandy, France. > 5,000 ships and 13,000 aircraft supported the D-Day invasion, and by day's end, the allies gained a foot-hold in Continental Europe.

## 1948: Berlin Blockade and Airlift

On June 24, 1948, the Soviet Union attempted to control all of Berlin by cutting surface traffic to or from the Allied zones. U.S. and British forces responded with the Berlin Airlift, flying food, fuel, and other supplies to the population of Berlin. The Soviets lifted the blockade on May 12, 1949 though airlift missions continued until that September.

## 1945: VE Day

On May 8, 1945, Victory in Europe was declared. By this time, ETOUSA had two-million troops on the continent. Unlike the American Expeditionary Forces from WWI, the U.S. continued to keep troops in Europe as a way to promote peace and stability for their allies. ETOUSA was re-designated U.S. Forces European Theater, and was headquartered in Frankfurt, Germany. The command would be re-designated as European command in 1947 (not to be confused with USEUCOM), and then as U.S. Army Europe in 1952. USAREUR was headquartered in Heidelberg, Germany, until it moved to Wiesbaden in 2013, where it remains to this day.

## 1961: Berlin Crisis; Berlin Wall erected

In Aug. 1961, East Germans, backed by the Soviet Union, began building a barrier between West and East Berlin to stave off the looming economic crisis of a mass defections westward. The Berlin Wall became the physical demarcation between Eastern Block and Western Europe. Soviet and American tanks briefly faced off during the crisis at "Checkpoint Charlie." The tensions were quelled by negotiations between Washington and Moscow, but the physical and ideological barrier continued to divide the city and Germany until 1989.

## 1993: SPP established

The State Partnership Program now includes 85 partnerships with 93 nations around the globe. The SPP evolved from a 1991 USEUCOM decision to set up the Joint Contact Team Program in the Baltic Region with Reserve component Soldiers and Airmen. A subsequent National Guard Bureau proposal paired U.S. states with three nations emerging from the former Soviet Bloc and the SPP was born, becoming a key U.S. security cooperation tool, facilitating cooperation across all aspects of international civil-military affairs.

## 1999: NATO KFOR deploys

UN Security Council Resolution 1244 activated a NATO-led Kosovo Force to promote stability in Kosovo. Shortly thereafter, the first elements of NATO KFOR, entered Kosovo. Today, NATO KFOR continues its mission in maintaining a safe and secure environment.

## 2008: SETAF joins USAFRICOM

On Oct. 1, 2007, U.S. Africa Command established headquarters in Stuttgart, Germany, as a new combatant command to oversee the African theater. A year later, SETAF was named the new Army Service Component Command to USAFRICOM and was eventually re-designated as U.S. Army Africa in 2012.

## 2020: Consolidation

In Aug. 2020, V Corps was reactivated. Two months later, the U.S. Army consolidated U.S. Army Europe and U.S. Army Africa into a new command: U.S. Army Europe and Africa. This new command is the Army Service Component Command for both USEUCOM and U.S. Africa Command. U.S. Army Africa was re-designated as the U.S. Army Southern European Task Force, Africa. The consolidation allows the headquarters to focus on tasks at the strategic-level, while the reactivated V Corps and re-designated SETAF-AF focus on readiness and interoperability with allies and partners at the operational and tactical levels. V Corps plans and synchronizes operations in Europe, while SETAF-AF focuses on all Army operations and assets in Africa and Italy, and maintains direct coordination with USAFRICOM.

# FOUR DECADES OF ITAM

1980s

1985

Hohenfels Training Area (HTA) chosen as one of four ITAM pilot sites to bring "drawing board" concepts to reality. With full integration of ITAM program into other training areas in 1988 and 1989, HTA becomes model for training area land management worldwide.



1986

Hohenfels among first installations to install 62 monitoring plots and adopt Land Condition Trend Analysis (LCTA) program, which began U.S. Army-wide implementation in 1987.

1987

Flood, causing extensive damage to communities near training area costs U.S. Army millions of dollars. Following flood event, ITAM program receives complete support, from local level to Pentagon.

1988

Cited as benchmark year, 250 claims attributed to HTA runoff filed against U.S. Army. By early 1990s, claims drop to fewer than 10 per year.

1989

Supported by Construction Engineering Research Laboratory (CERL), 32 GIS data layers created for HTA, including land cover, aspect, and hydrography.

1992

Installation of six water-monitoring stations at HTA, continuously recording data on precipitation, surface water run-off, and levels of contamination and sediment entering local streams.



1993

Functional proponenty for ITAM transferred to Training Directorate, Office of the Deputy Chief of Staff for Operations and Plans (ODCSOPS) at Headquarters, Department of Army (HQDA). Action served to align policy and funding for ITAM with U.S. Army training programs.

1994

Following successful installation of monitoring plots at HTA in 1986, installation of 70 plots at Grafenwoehr Training Area (GTA) and 20 plots at Schweinfurt TA, extending monitoring capabilities of ITAM LCTA component across USAREUR.

1998

Army Regulation 350-4 sets forth the objectives, responsibilities, and policies for ITAM program, emphasizing sustainable land use through implementation of uniform land management program.



1999

First comprehensive aerial imagery surveys at HTA, GTA, and majority of Local Training Areas (LTAs), providing basis for all future GIS initiatives.

2000

ITAM provides instructional support for "Environmental Management for Military Forces" course at NATO School in Oberammergau and U.S. delegates for NATO Environmental Training Working Group.



2001

Confirmed Natura 2000 Flora and Fauna Habitat (FFH) sites include 81% of all USAREUR training areas. Citing each area's biodiverse habitats, EU designation mandates additional assessments for all ITAM initiatives.



2002

Initiation of first LTA LRAM projects in Germany, and completion of two comprehensive mapping initiatives at HTA and GTA: GPS survey of > 20K off-limit markers, and Historic Forest Mapping to determine change in forest cover since 1940s.

First USA representative, with EUCOM participates in NATO Environmental Protection Working Group.



2004

First dedicated installation ITAM Coordinators hired for HTA and GTA, completing network of installation-level ITAM management across Command.

2005

First Sustainable Range Program (SRP) Budget Advisory Council (PBAC) brings all fiscal year ITAM and Range projects into one comprehensive project list for approval by USAREUR Mission Support Commands and Commanding General, streamlining project funding and execution process.



2007

Grafenwoehr Regional Support Center (RSC) established and recognized by Department of Army, providing GIS support across USAREUR. Initiation of SRP support to AFRICOM Theater Security Cooperation.

today

2008

Department of Army recognizes USAREUR ITAM as top Tier 1 program in U.S. Army, citing outstanding land repair and maintenance work completed since 1980s at HTA.



2012

Development of Tap In web mapping application, allowing for users to search training facilities, query scheduling data and access various resources.



2013

Army Range Mapper made available as a mobile device app for route-planning between U.S. Army training locations throughout Europe.



2018

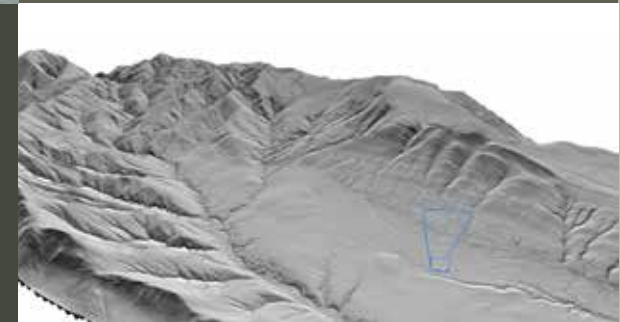
Data for select AFRICOM and CONUS sites added to Tap In.

2021

Completion of the Bergheim Church Bat Sanctuary, showcasing environmental protection, cultural resource preservation and cooperation with the 7th ATC military mission.

2022

ITAM continues to provide expeditionary support for GIS and LRAM projects, particularly in Eastern Europe.



# WHO NEEDS WHAT

## 10s

### Commanders / Organization Managers

Commanders, Directors and Program Managers



7th ATC Overview Training Support Map

## 1,000s

### Planners

G3/S3, Master Gunners, Safety, Range and Training Area Managers, SRP Personnel, Garrison Planners, Environmental Officers and SMEs



Tap In



Army Range Mapper Mobile App



Android



iOS



Soldier's Field Card Mobile App



Android



iOS



Android



iOS



USAREUR Environmental Officer Guide Mobile App



Training Support Mapping Kiosks



Soldier's Field Cards



Installation Maps



Custom Maps



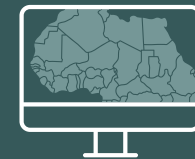
Raised Relief Maps



Annual Reports



Map Atlases



ITAM Viewer



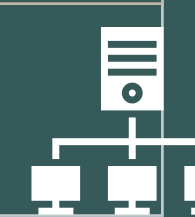
Studies



Drone Surveys



ArcGIS Online Services



License Server

Data Warehouse

## 10,000s

### Viewers

U.S. Soldiers, Garrison and HQ Civilians, Training Support Civilians, Host-Nation Agencies and select Foreign Military Personnel

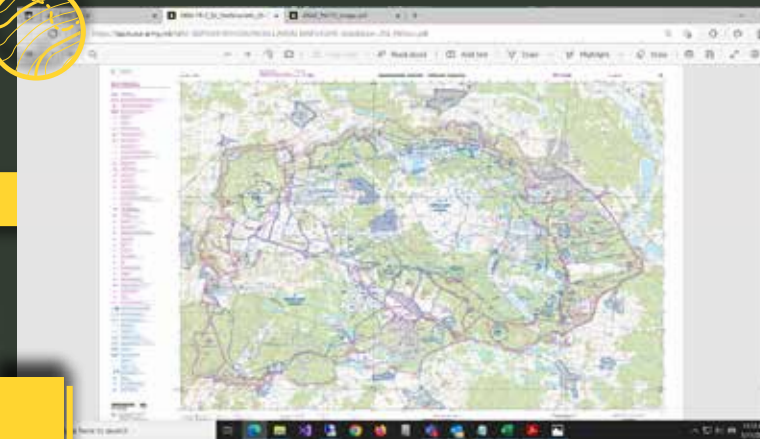
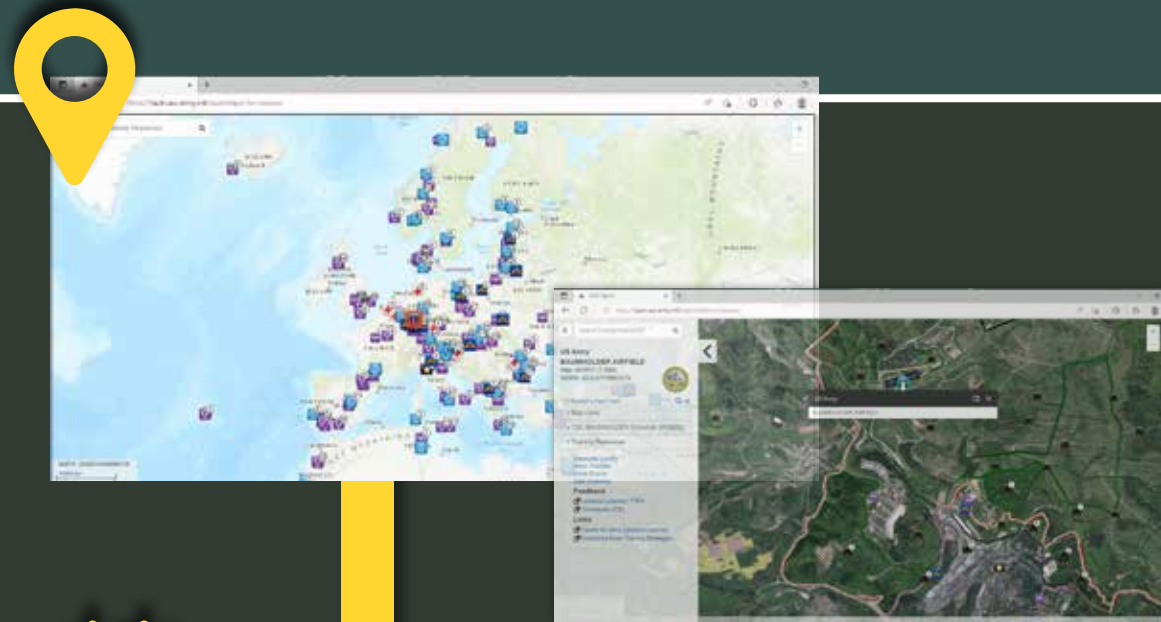
## 100s

### GIS Analysts

Professional GIS Personnel at SRP, Garrison, Units and select Contractors

## **TAP IN** The Tool for Training Planners

Tap In is a “Google Maps®” style Common Access Card (CAC) enabled NIPR net web application that allows users to explore and discover training resources throughout EUCOM, AFRICOM, PACOM and select CONUS locations. Tap In provides access to the latest information on international training sites, their size, capabilities and availability.



Visit: <https://tapin.eur.army.mil/>  
or search **7th ATC Tap In**

## 95 Regions

- » Medical Facilities
- » Range Control
- » Training Support Centers

## 3,998 Total Maps

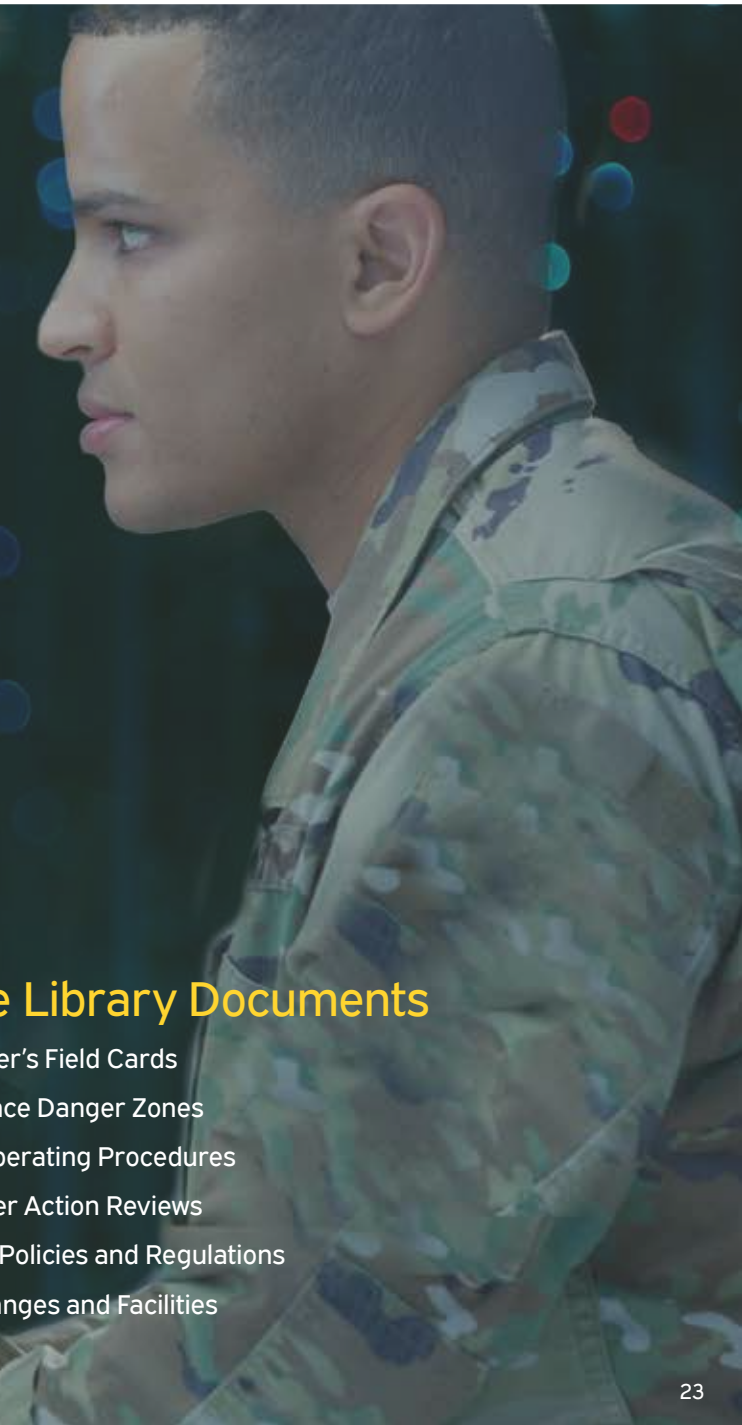
## 479 Training Areas

- » USAREUR-AF: 439
- » USARNORTH: 5
- » USARPAC: 27
- » USARNORTHCOM: 8

## 4,998 Facilities

## 8,062 Resource Library Documents

- » Digital Soldier's Field Cards
- » Range Surface Danger Zones
- » Standard Operating Procedures
- » Training After Action Reviews
- » Host Nation Policies and Regulations
- » Photos of Ranges and Facilities



# BY THE NUMBERS

210,416

Soldiers trained at GTA

9,811,634

Rounds fired in GTA

## 2022 TAP IN Statistics

3,080,886  
TAP IN and SRP portal hits

39,545  
TAP IN visits

3,274  
SRP portal web visits

## 2022 Mobile App Download Statistics

2,122  
Total downloads

1,441  
Soldier's Field Cards

483  
Army Range Mapper Mobile

198  
Environmental Guide

## 2022 GIS Support Statistics

72,850  
Soldier's Field Cards Printed

28,950  
Maps Printed

642  
GIS Data Requests

273  
Custom Maps Authored

122  
Technical GIS Requests

8  
SOPs and BMPs written

# ITAM SUPPORTED EXERCISES

## Allied Spirit 22



Approximately 5,200 soldiers from 15 nations participated in the exercise Allied Spirit 22 at JMRC Hohenfels. Unlike the Saber Junction and Combined Resolve series, which feature U.S. brigade combat teams in a lead role augmented by allies and partners, Allied Spirit places an allied unit as the main training audience. Germany's 1st Armored Division provided support for the most recent installment of Allied Spirit 22. This was developed to enhance NATO and key partners readiness for specified war-fighting functions.



## African Lion 22



Hosted by Morocco, Ghana, Senegal and Tunisia, African Lion is U.S. Africa Command's largest, premiere, joint, annual exercise. During African Lion 22, more than 7,500 participants from 28 nations and NATO trained together with a focus on enhancing readiness for U.S. and partner nation forces. The exercise integrated relevant partners and allies with mutual defense and security interest connecting vital lines of communication in North Africa, the Mediterranean and Atlantic Oceans.



## DEFENDER-Europe 22



DEFENDER-Europe is an annual large-scale U.S. Army-led, multinational, joint exercise designed to build readiness and interoperability between U.S., NATO and partner militaries. DEFENDER-Europe 22 focused on building operational readiness and interoperability included more than 3,400 U.S. and 5,000 multi-national service members from 11 Allied and Partner nations. Operations were conducted across nine countries.



## Saber Junction 22



Saber Junction 22 was a multinational rotational exercise designed to assess the readiness of the U.S. Army's 173d Airborne Brigade to execute unified land operations in a joint, combined environment and to promote interoperability with more than 4,500 participants from the U.S. and Allied and partner nations at Grafenwoehr and Hohenfels Training Areas.



## Dynamic Front 22



Exercise Dynamic Front is a U.S. Army Europe and Africa directed, 56th Artillery Command led, multinational exercise designed to improve Allied and Partner nation's ability to execute multi-echelon fires, and test interoperability of both tactical and theater-level fires systems in a live environment. Dynamic Front 22, held at Grafenwoehr Training Area, included approximately 3,000 participants from 19 nations.



## Combined Resolve XVII



Combined Resolve XVII was held at JMRC Hohenfels. This exercise provided a combat training center rotation for the U.S. Army's 1st Armored Brigade Combat Team, 3rd Infantry Division. The unit deployed to Europe as part of the XVIII Airborne Corps' Immediate Response Force on short notice in February to support NATO allies and deter further aggression against NATO member states after the Russian invasion of Ukraine.



# ENVIRONMENTAL OUTREACH

Environmental management on U.S. Army Garrison (USAG) Bavaria installations is the responsibility of the Directorate of Public Works (DPW). As part of the DPW, the Environmental Division oversees hazardous waste management, environmental monitoring and remediation, natural resources conservation, cultural resources preservation, environmental training, and public awareness. The Environmental Division provides environmental guidance, support and liaison services to those who live, work and train on our installations.

The USAG Bavaria's environmental education, awareness and outreach program continues to make a difference in the community by providing valuable information through social media outreach and in-person learning.

A focus for 2022 has been the distribution of the USAG Bavaria Wildlife and Health Handbook: What to do when wildlife meets daily life. This booklet includes information about various local plants, animals and insects, as well as tips for what to do if you do encounter them.

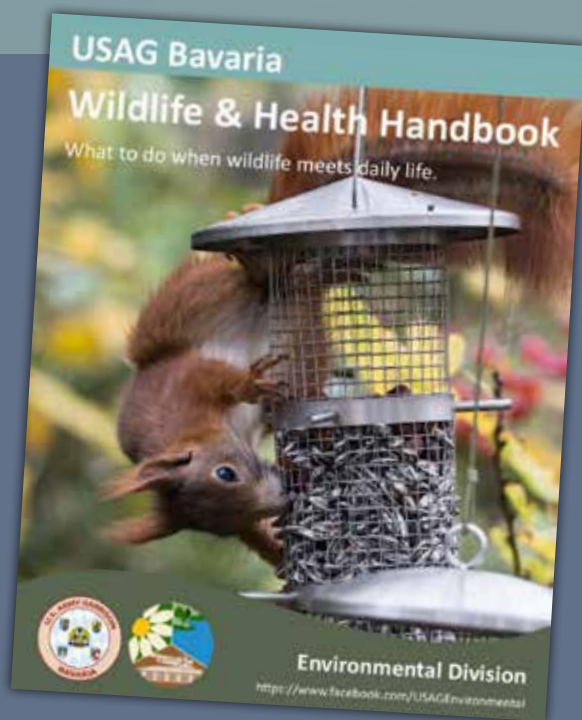
## USAG Bavaria Wildlife & Health Handbook

Ever wondered how to safely remove a bat or giant house spider from your home? Ever found a baby bird and wondered what you should do? Do you know who to call to request vegetation maintenance or pest control?

The USAG Bavaria Wildlife and Health Handbook has the answers to all these questions and more! This handbook was created to be a guide for those who live, work and train at the garrison for when wildlife meets daily life.

Physical copies are available at your Environmental Office or a digital copy can be downloaded here:

[https://home.army.mil/bavaria/application/files/5416/1709/4764/USAG\\_Bav\\_Wildlife\\_Health\\_Handbook\\_March2021.pdf](https://home.army.mil/bavaria/application/files/5416/1709/4764/USAG_Bav_Wildlife_Health_Handbook_March2021.pdf)



## Common Foxglove

The beautiful, but deadly, common foxglove can be found in woodlands and gardens, as well as along roadsides and hedgerows. This plant is characterized by long flowering stems that can reach 1-2 m (3.3-6.6 ft) in height.

The sap, flowers, seeds and leaves of the common foxglove are poisonous, even in small doses. During its early stages of growth, this plant can be mistaken as comfrey or plantain, but consumption can result in dangerous side effects and even death.

Do you know how to recognize common foxglove? Check out page 6 of the Wildlife & Health Handbook!

## Wild Boar



The wild boar is an ancestor of the domestic pig. This animal is adaptable and active in many different types of habitat, including areas near urban settlements. Wild boars are omnivores and their diet includes everything from leaves, roots, and fruit to grasses, mushrooms, insects, snails, birds, and small mammals.

Wild boars can be very dangerous to humans. If you encounter a wild boar, take the following steps to avoid an attack: Be calm and move slowly away, do not provoke, keep a safe distance, and do not place yourself between adults and piglets.



# PROTECTING BIODIVERSITY

Stretching across the European Union, Natura 2000 is the largest coordinated network of protected areas in the world. The Natura 2000 network currently comprises over 27,000 sites, covering more than 1,000,000 km<sup>2</sup>, i.e. almost one fifth of Europe's land area. These areas are home to numerous rare and endangered species.

Many military training areas in Europe are characterized by high ecological value. Due to the significance of such areas to the conservation of natural habitats and species diversity, large proportions of these training areas have been incorporated into the Natura 2000 network and are protected under European legislation.



ITAM is active in coordinating with various stakeholders to optimize land management practices that maintain natural environments support the sustainability of training lands and ensure Army capabilities.

In November 2022, ITAM participated in the Natura 2000 conference LIFE NATURARMY, held in Sevres, France. The LIFE NATURARMY project focuses on implementation of a biodiversity strategy dedicated to military land and experience-sharing at the European level.



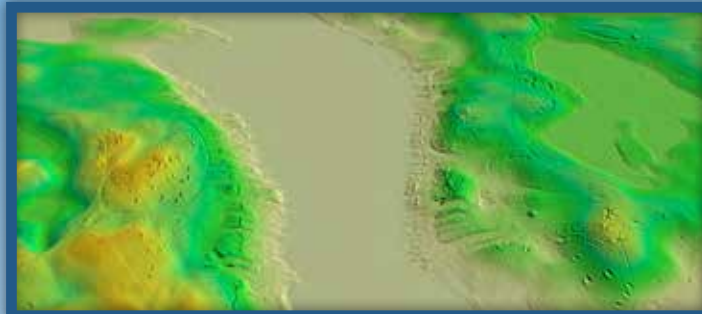
Wildlife photos taken at military training areas in Germany provided by the Technische Universität Dresden

# 2023 INITIATIVES

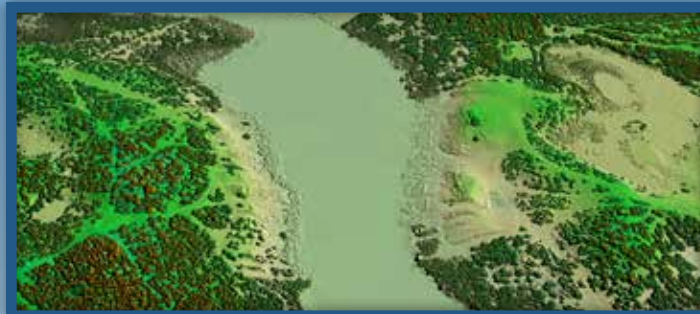
## LiDAR Training

Light Detection and Ranging (LiDAR) data enable users to generate high-resolution maps, create 3D representations, and perform complex spatial analyses, such as line-of-sight analysis. In 2023, ITAM will be performing training in the following countries to familiarize host nation personnel with utilization of site-specific LiDAR data:

- Croatia
- Bulgaria
- Hungary
- Greece
- Czechia
- Slovakia



Digital Terrain Models are derived from LiDAR data and depict the bare-earth surface.



Digital Surface Models depict everything on the earth's surface (i.e. as is in real world: trees, structures, etc.).

## Climate Change Project

European Command (EUCOM) has identified a requirement for a model/methodology for climate response management to avoid or limit environmental impacts on training ranges for long-term viability and stewardship.

ITAM will provide support for this study to U.S. Army Corps of Engineers Construction Engineering Research Laboratory (CERL) in 2023.



## NATO School Oberammergau

Located in southern Germany, the NATO SCHOOL Oberammergau (NSO) is NATO's premier facility for training and education at the operational level. NSO conducts hundreds of multinational programs annually in direct support of current and developing operations, strategy, policy, doctrine and procedures.



ITAM will continue to provide support for the Environmental Officers Course at NSO, with two occurrences currently planned for 2023.



On the right: Soldiers recover a M68A2 line charge during a training exercise at Grafenwoehr Training Area, Germany. Photo by Markus Rauchenberger, TSAE.



For further information or copies of this Stewardship Report, please contact the ITAM office: +49 9641 70 569 0366 or e-mail: [usarmy.bavaria.7atc.list.usareur-srp@army.mil](mailto:usarmy.bavaria.7atc.list.usareur-srp@army.mil) or visit our website:



Public access



CAC-enabled access

Photos primarily provided by:  
[www.dvidshub.net](http://www.dvidshub.net)  
[www.flickr.com/photos/7armyjmtc](https://www.flickr.com/photos/7armyjmtc)

<https://srp.usareur.army.mil>